



**INTERSTATE® BRICK**

## *Project Spotlight-Emperor™*

**Project Location:**

Amherst, MA

**Completion Date:**

2006

**Distributor:** Edwin Olander Inc.

Springfield, MA

**Architect:**

Architectural Resources, Cambridge

**General Contractor:**

Dimeo Construction

**Mason Contractor:**

Chabott & Burnett Const. Inc.



Dimeo Construction was given the daunting task of constructing five dormitory buildings in just 18 months at the University of Massachusetts in Amherst. With a proposed start date of late summer, the schedule would span two New England winters. The buildings were designed with load bearing concrete masonry units, precast concrete plank floors, and modular brick veneer as the specified exterior finish material.

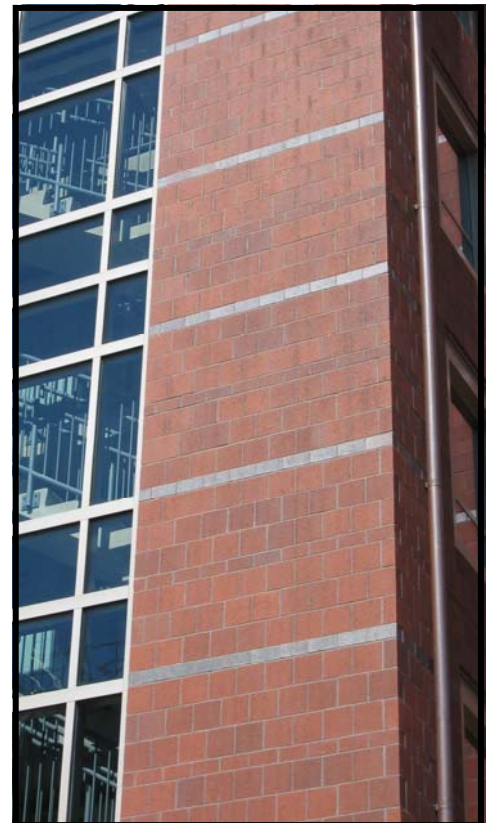
Considering the critical time path, the proposition of using a larger brick appealed to all parties in order to condense the construction

## *UMASS Dormitories*

schedule. Sample panels from three brick manufacturers were erected using both 4"x12" and 8"x8" brick. The masonry contractor then offered a significant reduction in their contract price and schedule to utilize Interstate Brick's Super Emperor™ 8"x16" veneer with a center slot tuck pointed with mortar. Therefore, each brick laid appeared to be two of the 8"x8" units when viewed in elevation. It has been well established that the use of large brick veneer is a great solution for helping architects, construction managers and masons resolve time

constraint issues on the job-site and can reduce the cost of the masonry package. Regardless of the building type, large veneer is a creative solution to simulate the scale of smaller units, while increasing daily production rates on a square foot basis. The tall, massive walls of these dormitory buildings provided an excellent opportunity for the masonry contractor to gain production, decrease schedule and reduce costs. Neither the design intent nor the quality was compromised, and the result is a series of rich, welcoming elevations.

*Schedule affects the bottom line!*





**INTERSTATE® BRICK**

## *UMASS Dormitories*

*“Our men worked seven days a week to finish this job on time, and Interstate Brick’s labor-saving Super Emperor™ con-*

*tributed to our success in achieving our goal.”*

Kristin Capell,  
Chabot & Burnett  
Construction



### *Project Particulars:*

**Brick sizes used:**

Super Emperor™ 4x8x16 units and  
8” Closures

**Brick colors used:**

Mountain Red

**Total unit quantity:**

115,000

**Total brick wall area:**

100,000 SF

**Total project floor area:**

313,680 SF/5 buildings

**Special shapes:**

4x8x12 corner starters

**Net waste:**

2% or 2,300 units

*Note this:*

*An added benefit of larger units is that the risk of water breaching the wall through the mortar is reduced by a factor of 3 versus modular brick.*



***We’re on the Web!***

9780 South 5200 West  
West Jordan, UT

84088-5689

(800) 233.8654

(801) 280.5220 Facsimile

[www.InterstateBrick.com](http://www.InterstateBrick.com)

When Interstate Brick was formed in 1891 we established one simple goal for our company: to be the best brick manufacturer in America. Today the attainment of that goal can be seen in a variety of premier brick products from thin brick to veneer to structural which are often being imitated but never duplicated by other national manufacturers. Interstate Brick continues to grace the most sophisticated schools, office buildings, condominium towers, malls, federal buildings and residential homes from coast to coast. This goes to show what a difference one simple goal can make. Simply put, nothing else stacks up.



# *Nothing else Stacks Up!*